

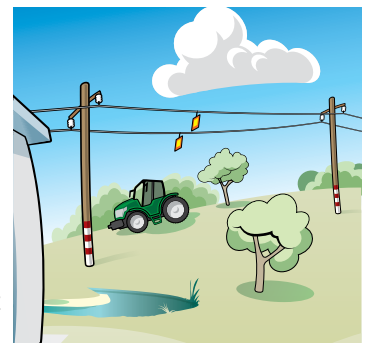
Equipment safety

- Check electrical equipment and extension leads for damage before you use them.
- If you find damaged electrical equipment or extension leads throw them out after you disconnect and cut off the cord and plugs at each end.
- Turn off the power before touching, cleaning or maintaining any electrical equipment—especially equipment used in or near water.
- Before purchasing new electrical equipment look for the regulatory compliance mark (RCM) to show it meets Australian safety requirements.
- Only maintain, service and operate electrical equipment in accordance with manufacturers' instructions.



Overhead powerlines and underground cables

- Make sure there are no crops or trees planted under powerlines or around poles and their supporting stay wires.
- Clearly mark power poles and their supporting stay wires on your property to avoid accidental damage. Contact your electricity provider for advice.
- Ensure private power poles on your property are maintained to keep them in good condition. Contact your electricity provider for advice.
- Don't store or move irrigation pipes under powerlines.
- Don't operate or park vehicles or equipment under powerlines.
- Contact relevant authorities and the landowner about any underground cables that have been installed near any proposed excavation or before post driving.
- Call Before You Dig Australia on 1100 or visit byda.com.au for current information about any underground essential services (this does not include private property).
- De-energise supply (you may need to contact your energy provider or licensed electrician) and visually locate cables by potholing using non-mechanical excavation (hydrovac or hand tools) to prove the exact location.



Shocks and tingles

- If you get a shock or tingle from electrical equipment, taps or other metal fittings don't ignore it—it's a sign something's not right.
- If you get a shock or tingle from using electrical equipment, **STOP** using it immediately. Either get a licensed electrician to check the equipment or throw them out.
- If you get a shock or tingle from taps or other metal fittings call Energex (13 19 62), Essential Energy (13 20 80), Rio Tinto - Weipa Operations (1800 820 711), or Ergon Energy (13 16 70) **immediately** and ask them to check your property. **This is a free service. DO NOT TOUCH** anything until it has been checked.



Safety switches

- Ensure safety switches are installed on all circuits to protect your family from electric shock.
- Press the 'Test' or 'T' button on each safety switch every three months (do this when you get your rates bill).



For more information

☎ **Electrical Safety Office 1300 362 128**

🖱 Electricalsafety.qld.gov.au

📘 [Facebook.com/electricalsafetyoffice](https://www.facebook.com/electricalsafetyoffice)