

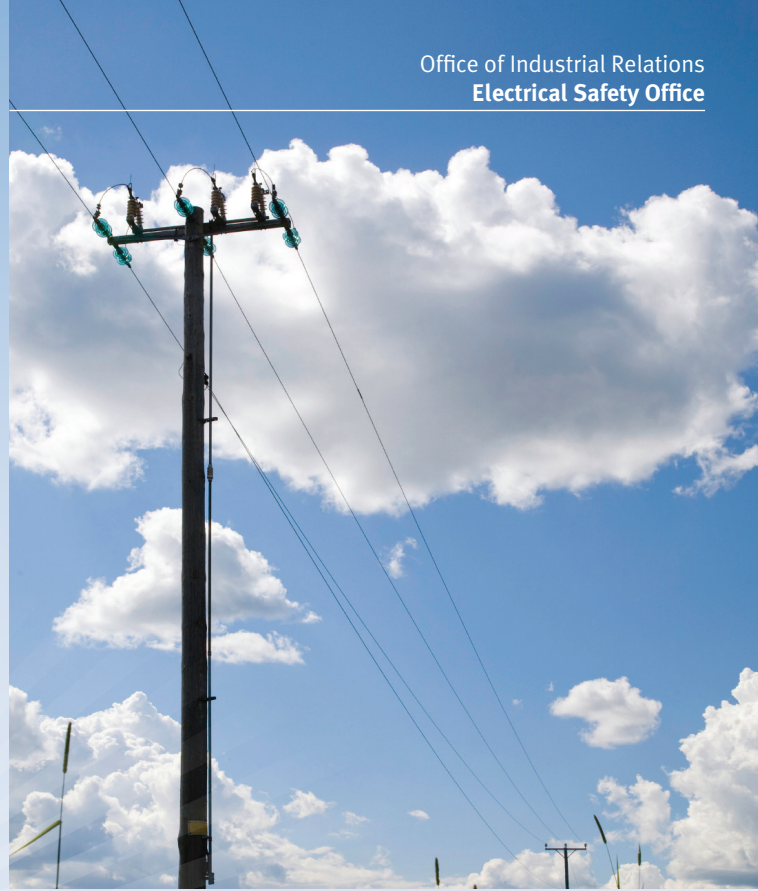
## More information

**Electrical Safety Office**  
electricalsafety.qld.gov.au  
1300 362 128

**Ergon Energy**  
ergon.com.au  
13 74 66

**Energex**  
energex.com.au  
13 12 53

**Powerlink Queensland**  
Powerlink.com.au  
1800 635 369



# Working safely near powerlines

Working near powerlines can be fatal. Touching them or straying into the exclusion zone around them can result in a serious electric shock.

If you must work near powerlines, you should follow these steps:

**1. Develop a safe system of work before you start**

- Develop a safe system that ensures a safe distance from powerlines is maintained (stay outside the exclusion zone).
- Identify overhead and underground powerlines by consulting maps and/or talking to the property owner and electrical entity.
- Conduct a site specific risk assessment – think about:
  - the type of plant and equipment/tools used
  - site and weather conditions
  - type of work being done
  - set-up and pack-up procedures.
- Put risk controls in place – the most effective way of controlling the risk is to de-energise the line for the duration of work where there is a risk of contact.

**2. Keep your workers and contractors informed about electrical safety**

- Induct and train your workers and contractors in safe work procedures, emergency procedures, and exclusion zones (Figure 1).

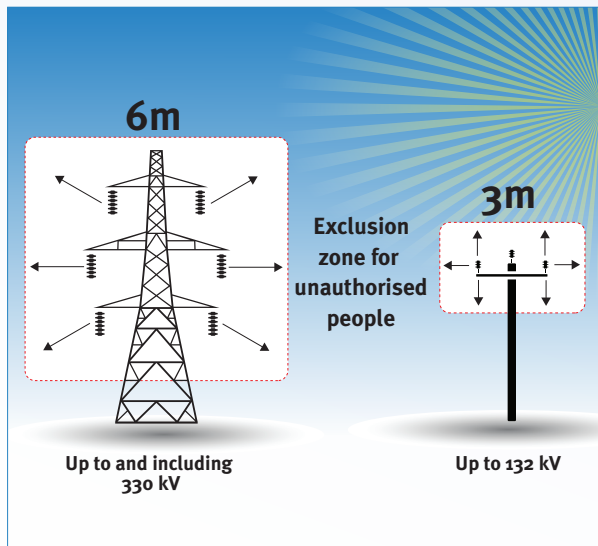


Figure 1.

- Carefully plan the tasks to be completed near powerlines and work away from them whenever possible.
  - Show your workers the safe distance from an exclusion zone a powerline by marking it on the ground.
  - Ensure people are aware that powerlines sag or sway in hot or windy weather (Figure 2).
- 3. Stay outside exclusion zones**
- Make powerlines and poles visible. Ask your electricity entity for permission to paint power poles and/or have them install markers or flags on the powerlines.
  - When tree cutting plan your work so tree branches do not fall across powerlines.
  - Where possible, use insulated or non-conductive tools and equipment.
  - Operators should use a safety observer when carrying out work near powerlines.
  - Follow the safety advice you obtain from your electricity entity.

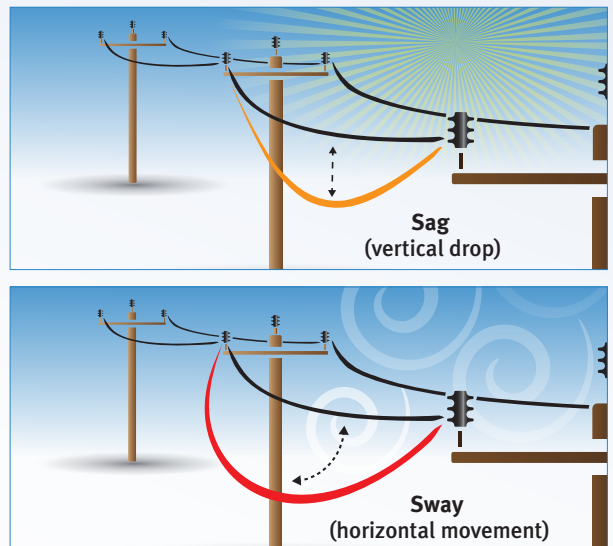


Figure 2.